

Physical Stock Verification Report

About Auto Physical Stock Verification Report

Introduction

Tally has enabled to provide solutions to simplify the business needs to the level as simple as possible. One such module is Auto Physical Stock Verification Report.

This module is used to verify the physical stock maintained in comparison to the stock in Tally. Here the data is sorted in a manner such that the report displays the difference between the stocks maintained.

Installation

This module is installed / configured automatically when downloaded from the Tally Shop.

System requirements:

No additional hardware / software infrastructure is required for executing and operating this module.

Physical Stock Verification Report

Detailed Setup Guide:

To operate this capability, user will have to follow the following steps:

a) The Gateway of Tally screen appears as below when the file is active.

Tally.ERP 9

P: Print E: Export M: E-Mail O: Upload S: Shop G: Language K: Keyboard K: Control Centre H: Support Centre H: Help Ctrl + M

Gateway of Tally

Current Period: 14-2011 to 31-3-2012 Current Date: Monday, 10 Oct, 2011

List of Selected Companies

Name of Company	Date of Last Entry
Demo Company	10-Oct-2011

Gateway of Tally

- Masters**
 - Accounts Info.
 - Inventory Info.
 - Quick Setup
- Transactions**
 - Accounting Vouchers
 - Inventory Vouchers
- Utilities**
 - Import of Data
 - Banking
- Reports**
 - Balance Sheet
 - Profit & Loss A/c
 - Stock Summary
 - Ratio Analysis
- Display**
 - Stock Verification report
 - Multi Account Printing
- Quit**

Product	Version	License	Configuration	Calculator	Ctrl + N
Tally POWER OF SIMPLICITY	Series A Release 3.2 Latest	Serial Number 732087856 Account ID: mdbusiness@bsnl.in	Stat 144 156 Available 1 TOL(s) loaded		
Tally.ERP 9	Edition Users	Gold Unlimited	Tally.NET subscription valid till 21-May-2012	Proxy ODBC Server on Port 9000	None 1 >

Tally MAIN --> Gateway of Tally (c) Tally Solutions Pvt. Ltd., Mon, 28 Nov, 10:41:50

Right Panel (F1-F12):

- F1: Select Cmp
- F1: Shut Cmp
- F2: Date
- F2: Period
- F3: Company
- F3: Cmp Info
- F4: Connect
- F4: Disconnect
- F11: Features
- F12: Configure

Physical Stock Verification Report

b) The screen shows the stock as per tally.

Tally.ERP 9

P: Print E: Export M: E-Mail O: Upload S: Shop G: Language K: Keyboard K: Control Centre H: Support Centre H: Help

ClosingStockReport Demo Company Ctrl + M

CLOSING STOCK TALLY

Item Name	Group	Closing Quantity Tally	Physical Quantity	Stock Difference
Besan	□ Primary	(-)5 bag		(-)5 bag
Cpu	Hardware Components	34 nos		34 nos
Kaka Chana	□ Primary	(-)80 bag		(-)80 bag
Keyboard	Hardware Components	25 nos		25 nos
Monitor	Hardware Components	25 nos		25 nos
Printer	Hardware Components	8 nos		8 nos

Q: Quit

Tally MAIN --> Gateway of Tally --> ClosingStockReport --> ClosingStockReport (c) Tally Solutions Pvt. Ltd., Mon, 28 Nov, 10:51:21

Authorized Tally Partners - Delhi

Glow IPS

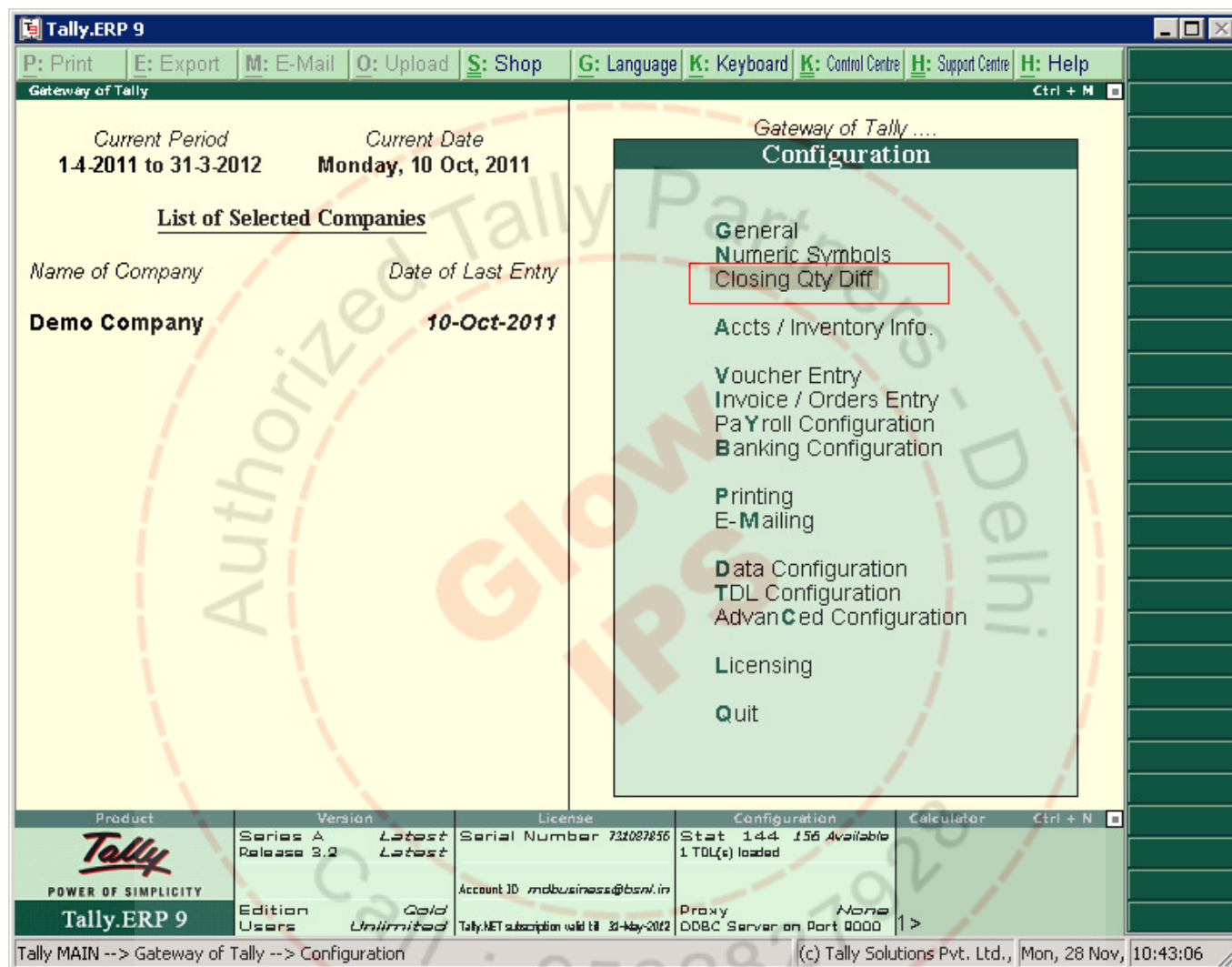
Call.: 9582821028

Right Panel:

- F1: Detailed
- F2: Period
- F3: Company
- R: Physical Stock
- X: Display Excel Sheet
- B: Filter Stock/Item
- N: Auto Column
- F8: Other Rep
- F9: Inv Rep
- F10: Acc Rep
- F11: Features
- F12: Configure
- F12: Range
- F12: Value

Physical Stock Verification Report

C) Now, the Excel file where physical stock is maintained is to be attached so that Tally can read the data. The option is available in F-12 Configuration as "Closing Qty Diff"



Physical Stock Verification Report

D) A sample of excel sheet is as below.

Book1 [Compatibility Mode] - Microsoft Excel

Home Insert Page Layout Formulas Data Review View Universal Document Converter

Clipboard Font Alignment Number Styles Cells Editing

H6

	A	B	C	D	E	F	G	H	I	J	K
1	StockItem	Quantity									
2	ABC	10									
3	BAC	20									
4	Mouse	30									
5	CPU	20									
6											
7											
8											
9											
10											
11											
12											
13											
14											
15											
16											
17											
18											
19											

Sheet1

Enter

Call.: 9582827928

Physical Stock Verification Report

E) The window appears as below. Here it is required to mention the file location for Tally to read.

Tally.ERP 9

P: Print E: Export M: E-Mail O: Upload S: Shop G: Language K: Keyboard K: Control Centre H: Support Centre H: Help

Closing Stock Configuration Demo Company Ctrl + M

Current Period: 1-4-2011 to 31-3-2012 Current Date: Monday, 10 Oct, 2011

Gateway of Tally Configuration

List of Selected Companies

Name of Company: Demo Company

General Numeric Symbols

Driver and File Information

Source From: Excel
 Driver Info: {Microsoft Excel Driver (*.XLS)}
 Location of File: C:\Auto Bank Reco
 File Name: ExcelRecoFile-BankStmt
 Table/Sheet Name: Sheet1

Column Titles for the following

Item Name: StockItemName
 Quantity: Quantity

Source

Access
 Excel
 Other

Product: Tally POWER OF SIMPLICITY Tally.ERP 9

Version: Series A Latest Release 3.2 Edition Users Gold Unlimited

License: Serial Number 731087856 Account ID: mdbusiness@bsnl.in Tally.NET subscription valid till 31-May-2012

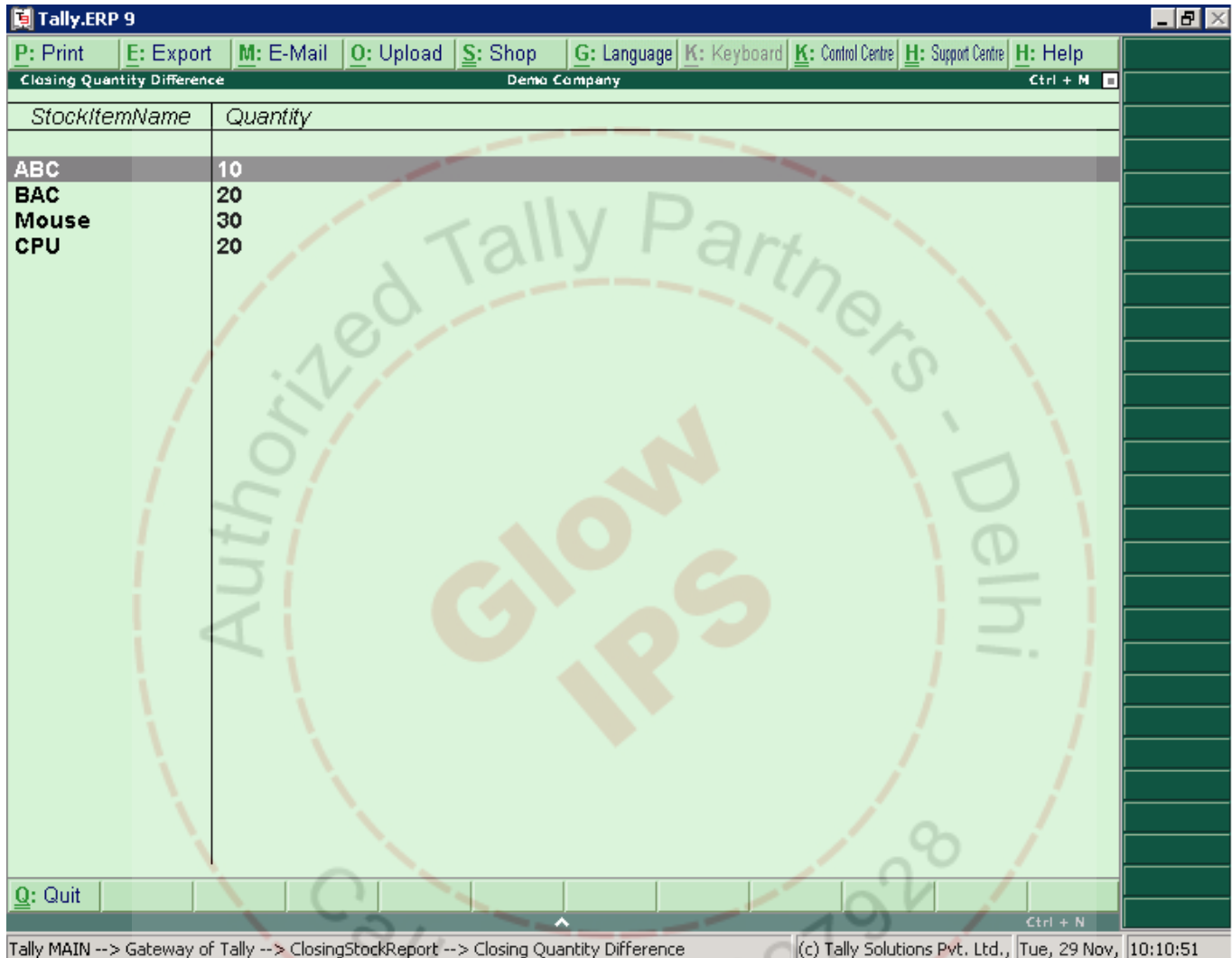
Configuration: Stat 144 156 Available 1 TOL(s) loaded Proxy: None ODBC Server on Port 0000

Calculator Ctrl + N

Tally MAIN --> Gateway of Tally --> Configuration --> Closing Stock Configuration (c) Tally Solutions Pvt. Ltd., Mon, 28 Nov, 10:44:42

Physical Stock Verification Report

F) Once the Tally reads the data. The below screen shows the data that Tally reads from Excel sheet. To display the below mentioned screen, use Alt + X key combinations. To go back to the main screen use "Escape".



StockItemName	Quantity
ABC	10
BAC	20
Mouse	30
CPU	20

Physical Stock Verification Report

G) To display the physical stock (excel data) use 'Alt + R" key combinations. The screen appears as below.

CLOSING STOCK TALLY				
Item Name	Group	Closing Quantity Tally	Physical Quantity	Stock Difference
Abc	<input type="checkbox"/> Primary		10 nos	(-)10 nos
Bac	<input type="checkbox"/> Primary		20 nos	(-)20 nos
Besan	<input type="checkbox"/> Primary	(-)5 bag		(-)5 bag
Cpu	Hardware Components	34 nos	20 nos	14 nos
Kaka Chana	<input type="checkbox"/> Primary	(-)80 bag		(-)80 bag
Keyboard	Hardware Components	25 nos		25 nos
Monitor	Hardware Components	25 nos		25 nos
Mouse	<input type="checkbox"/> Primary		30 nos	(-)30 nos
Printer	Hardware Components	8 nos		8 nos

Physical Stock Verification Report

H) The report also an option to filter out items that are nil...i.e. "zero quantity" items. Use "Alt + B" key combinations for Filter option. The screen appears as below.

CLOSING STOCK TALLY				
Item Name	Group	Closing Quantity Tally	Physical Quantity	Stock Difference
Besan	□ Primary	(-)5 bag		(-)5 bag
Cpu	Hardware Components	34 nos		34 nos
Kaka Chana	□ Primary	(-)80 bag		(-)80 bag
Keyboard	Hardware Components	25 nos		25 nos
Monitor	Hardware Components	25 nos		25 nos
Printer	Hardware Components	8 nos		8 nos